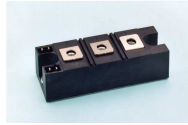


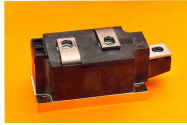
Unité de production
428 avenue Georges Durand BP 23131
72003 LE MANS Cedex 1
France
Tel : 33 (0) 2 43 41 14 14
Fax : 33 (0) 2 43 41 14 02
www.powerex.fr



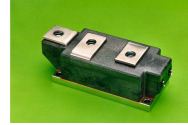
CD4



CD6



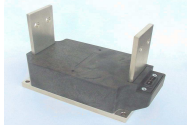
ND4



LD4



LS4



PA4, PD4, PS4

Thyristor / Diode Isolated Module SELECTOR GUIDE

TYPE	IT(AV) at Tc (1)			ITSM (2) 1 pulse (kA)	I ² _t for fusing (kA ² s)	storage temperature (°C)	Junction temperature range (°C)	V Isolation 25°C (V rms)	VDRM / VRRM max (V)	IRRM IDRMs typical (mA)	Vo Tj = Tj max (V)	rt Tj = Tj max (mΩ)	RthJC per module Both conducting (°C/W)	RthJC per Junction Both conducting (°C/W)	RthCS per module (°C/W)	tq typical Tj = Tj max (μs)	ton typical (μs)	Typical reverse recovery time (diode) @ Tj=25°C			di/dt Min repetitive (A/μs)	dv/dt Min (V/μs)	Igt Max 25°C (mA)	Vgt Max 25°C (V)	PACKAGE INFORMATION					
	(A)	(°C)	current code															IFM (A)	-dir/dt (A/μs)	trr (μs)					Max Mounting torque	Construction	Style	base plate dimensions (mm)		
CD42-90C	90	85	90	2.00@10ms	20@10ms	-40 to 125	-40 to 125	2500	1800	10	0.800	3.010	-	0.28	0.15	-	-	-	-	-	100	800	100	2.5	(M5) 4 Nm	Compression bonded	SCR / Diode	92x21		
CD47-90C	90	85	90	2.00@10ms	20@10ms	-40 to 125	-40 to 125	2500	1800	10	0.800	3.010	-	0.28	0.15	-	-	-	-	-	100	800	100	2.5	(M5) 4 Nm	Compression bonded	Diode / SCR	92x21		
CD62-15C	150	86	15	5.40@10ms	146@10ms	-40 to 125	-40 to 125	2500	1800	25	0.800	1.690	-	0.17	0.08	-	-	-	-	-	100	800	150	2.5	(M6) 6 Nm	Compression bonded	SCR / Diode	94x34		
CD67-15C	150	86	15	5.40@10ms	146@10ms	-40 to 125	-40 to 125	2500	1800	25	0.800	1.690	-	0.17	0.08	-	-	-	-	-	100	800	150	2.5	(M6) 6 Nm	Compression bonded	Diode / SCR	94x34		
CD62-15C	150	83	15	4.50@10ms	103@10ms	-40 to 125	-40 to 125	3000	3000	25	1.100	1.960	-	0.17	0.08	-	-	-	-	-	100	800	150	3	(M6) 6 Nm	Compression bonded	SCR / Diode	94x34		
CD67-15C	150	83	15	4.50@10ms	103@10ms	-40 to 125	-40 to 125	3000	3000	25	1.100	1.960	-	0.17	0.08	-	-	-	-	-	100	800	150	3	(M6) 6 Nm	Compression bonded	Diode / SCR	94x34		
ND42-21	210	92	21	8.8@8.3ms	320@8.3ms	-40 to 150	-40 to 130	2500	2000	50	0.813	0.810	0.07	0.14	0.03	150	7	-	-	-	800 (3)	500	150	3	(M6) 5 Nm	Compression bonded	SCR / Diode	93x50		
ND42-25	250	89	25	8.8@8.3ms	320@8.3ms	-40 to 150	-40 to 130	2500	1600	50	0.819	0.589	0.07	0.14	0.03	150	7	-	-	-	800 (3)	500	150	3	(M6) 5 Nm	Compression bonded	SCR / Diode	93x50		
ND47-25	250	89	25	8.8@8.3ms	320@8.3ms	-40 to 150	-40 to 130	2500	1600	50	0.819	0.589	0.07	0.14	0.03	150	7	-	-	-	800 (3)	500	150	3	(M6) 5 Nm	Compression bonded	Diode / SCR	93x50		
ND421825	250	84	25	8.8@8.3ms	320@8.3ms	-40 to 150	-40 to 130	2500	1800	50	0.877	0.731	0.07	0.14	0.03	150	7	-	-	-	800 (3)	500	150	3	(M6) 5 Nm	Compression bonded	SCR / Diode	93x50		
ND471825	250	84	25	8.8@8.3ms	320@8.3ms	-40 to 150	-40 to 130	2500	1800	50	0.877	0.731	0.07	0.14	0.03	150	7	-	-	-	800 (3)	500	150	3	(M6) 5 Nm	Compression bonded	Diode / SCR	93x50		
LD82-24	240	74	24	8.25@10ms	340@10ms	-40 to 150	-40 to 125	3600	4000	75	1.563	2.141	0.325	0.065	0.01	250	-	-	-	-	150	1000 typ	200	3	(M6) 6 Nm	Compression bonded	SCR / Diode	124x60		
LD42-43	430	80	43	10@10ms	500@10ms	-40 to 150	-40 to 125	3000	2200	80	0.880	0.660	0.0325	0.065	0.01	-	-	-	-	-	200	1000 typ	200	3	(M6) 6 Nm	Compression bonded	SCR / Diode	124x60		
LD42-50	500	86	50	16.3@10ms	1330@10ms	-40 to 150	-40 to 130	3000	1600	80	0.810	0.320	0.0325	0.065	0.01	-	-	-	-	-	200	1000 typ	200	3	(M6) 6 Nm	Compression bonded	SCR / Diode	124x60		
LD47-50	500	86	50	16.3@10ms	1330@10ms	-40 to 150	-40 to 130	3000	1600	80	0.810	0.320	0.0325	0.065	0.01	-	-	-	-	-	200	1000 typ	200	3	(M6) 6 Nm	Compression bonded	Diode / SCR	124x60		
PD42-06	600	81	06	26.9@10ms	3618@10ms	-40 to 150	-40 to 125	4000	2400	100	0.869	0.237	0.029	0.058	0.009	-	-	-	-	1500	25	22	150	300	200	4.5	(M6) 15 Nm	Compression bonded	SCR / Diode	178x102
PD47-06	600	81	06	26.9@10ms	3618@10ms	-40 to 150	-40 to 125	3000	2400	100	0.869	0.237	0.029	0.058	0.009	-	-	-	-	1500	25	22	150	300	200	4.5	(M6) 15 Nm	Compression bonded	SCR / Diode	178x102
PD42-07	700	82	07	36.5@10ms	6660@10ms	-40 to 150	-40 to 125	4000	1800	100	0.703	0.184	0.029	0.058	0.009	-	-	-	-	1500	25	22	150	300	200	4.5	(M6) 15 Nm	Compression bonded	SCR / Diode	178x102
PD47-07	700	82	07	36.5@10ms	6660@10ms	-40 to 150	-40 to 125	4000	1800	100	0.703	0.184	0.029	0.058	0.009	-	-	-	-	1500	25	22	150	300	200	4.5	(M6) 15 Nm	Compression bonded	Diode / SCR	178x102

Notes

- (1) 180° conduction
- (2) =100% reappplied voltage
- (3) non repetitive

* preliminary data sheet

All our modules are delivered with hardware and leads

ORDERING INFORMATION

Example : LD 42 16 50

LD4 : LD4 outline
2 : SCR / Diode
16 : VRRM = 1600 V
50 : IF(AV) = 500 A

All values shown in this document are subject to change for product improvement. The information, diagrams and all other data included herein are believed to be correct and reliable.